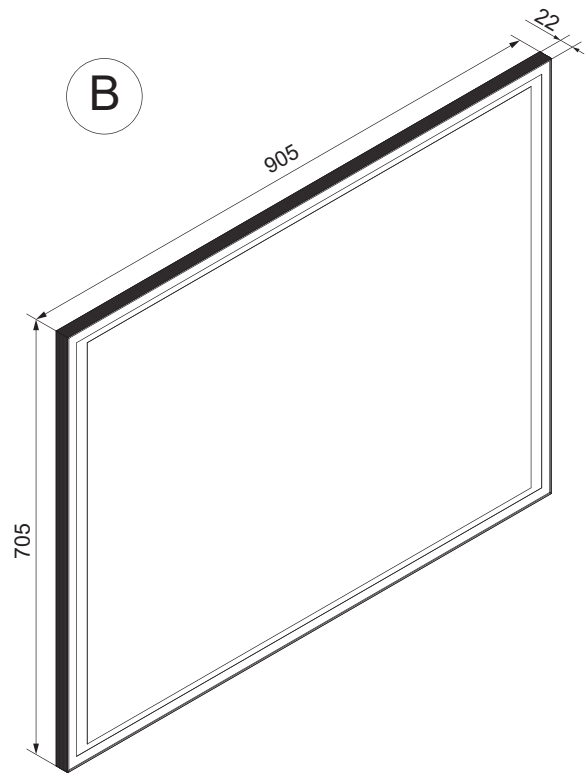
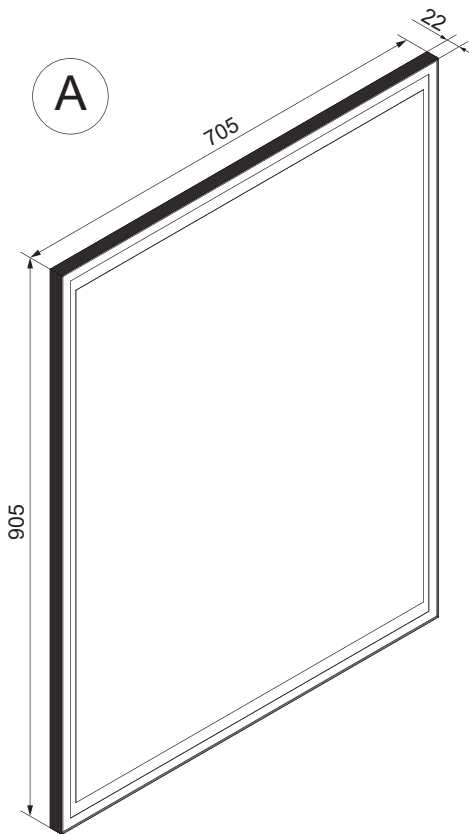
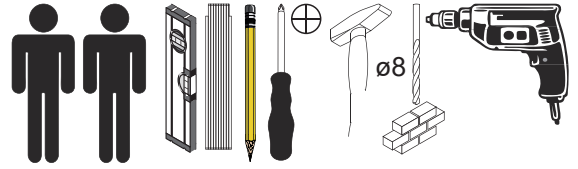


Dieses Produkt enthält Lichtquellen der Energieeffizienzklasse F.  
This product contains light sources of energy efficiency class F.



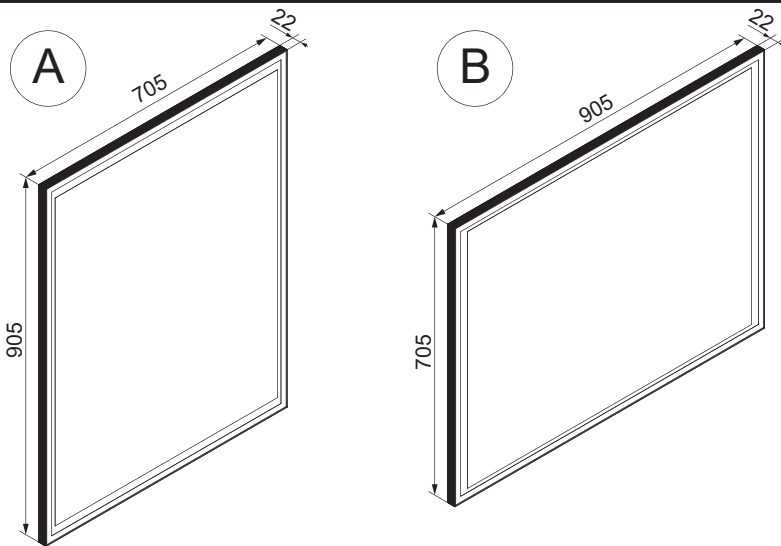
Raccolta differenziata  
Verifica le disposizioni del tuo Comune

<https://quefairedemesdechets.fr>

Alle Maßangaben sind ca.-Maße und können geringfügig abweichen.  
All measurements are approximate and may vary slightly.

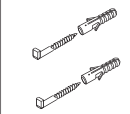
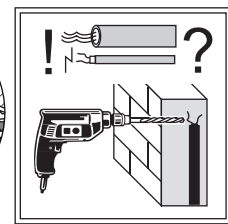
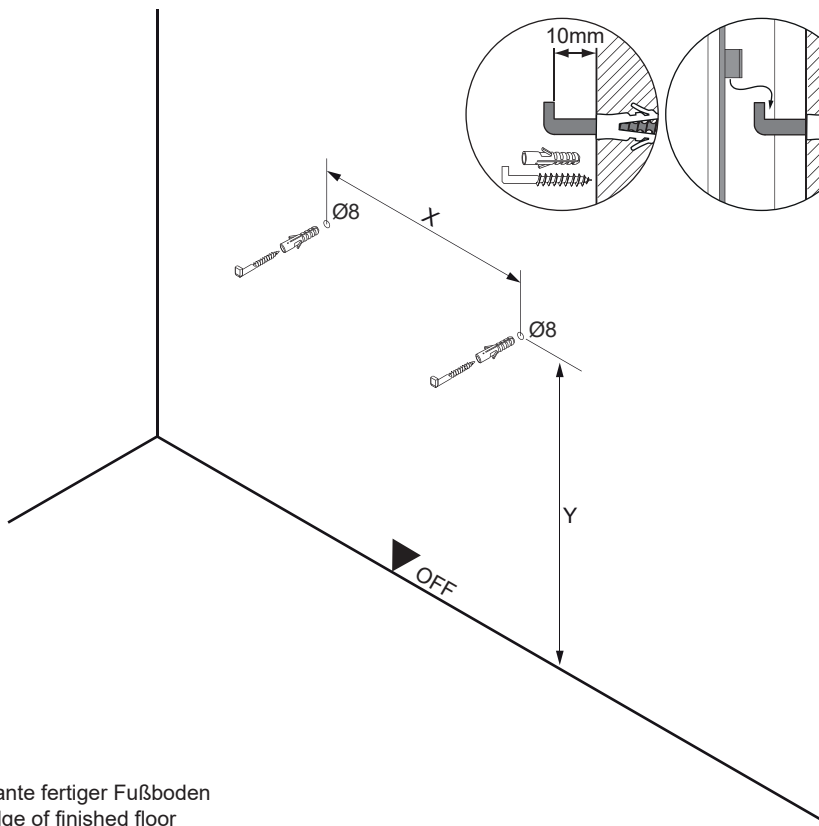
Fackelmann GmbH + Co. KG  
Sebastian-Fackelmann-Str. 6  
91217 Hersbruck • Deutschland  
FAX: 09151/811-294  
Servicetelefon: 09151/811-206  
servicebm@fackelmann.de  
www.fackelmann.com

5MAN774490 S1 13/24



Alle Maße sind in Millimetern angegeben, unverbindlich, vor Ort zu prüfen und stellen nur eine Empfehlung dar. Änderungen vorbehalten.  
 All dimensions are given in millimeters, without obligation, to be checked on site and represent only a recommendation. Subject to change.

1

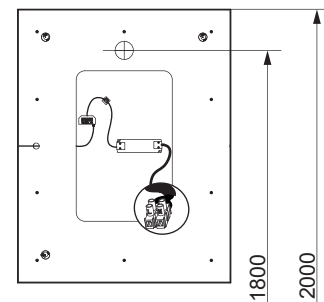
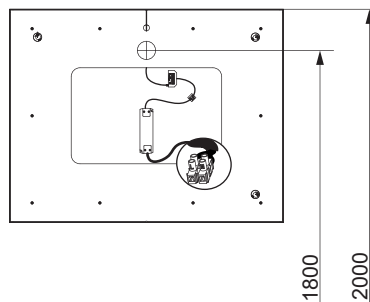


4XBB81HDN0

1 x

Schrank cabinet	X in mm	Y in mm
A	520	1916
B	720	1916

OFF = Oberkante fertiger Fußboden  
 Top edge of finished floor



Ansicht von hinten  
 View from the back

Mindestabstand zum Sensor 15 cm!  
 The minimum distance to the sensor switch is 15 cm!

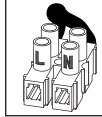
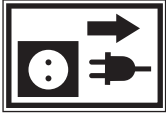
OFF



Austausch LED-Band/  
Change of LED-stripe

Abbildungen beispielhaft.  
Arbeitsfolge für alle Artikelnummern identisch.  
Illustrations only exemplary.  
Identical work sequences for all article numbers.

1

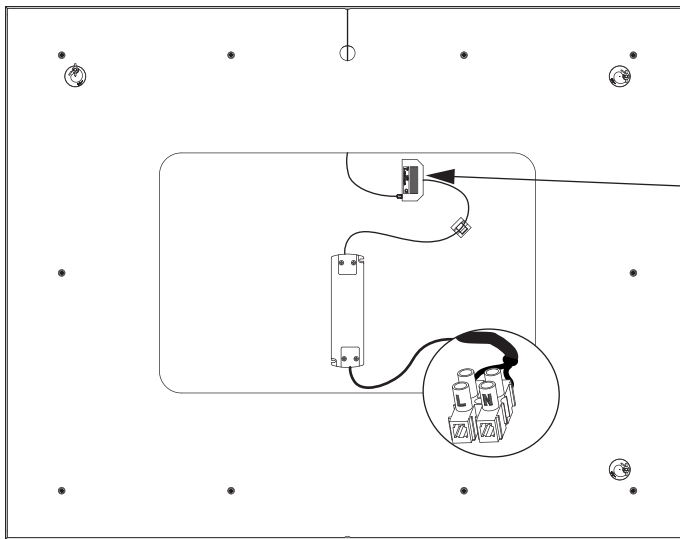


VDE 0100-701  
IEC 60364-7-701 !

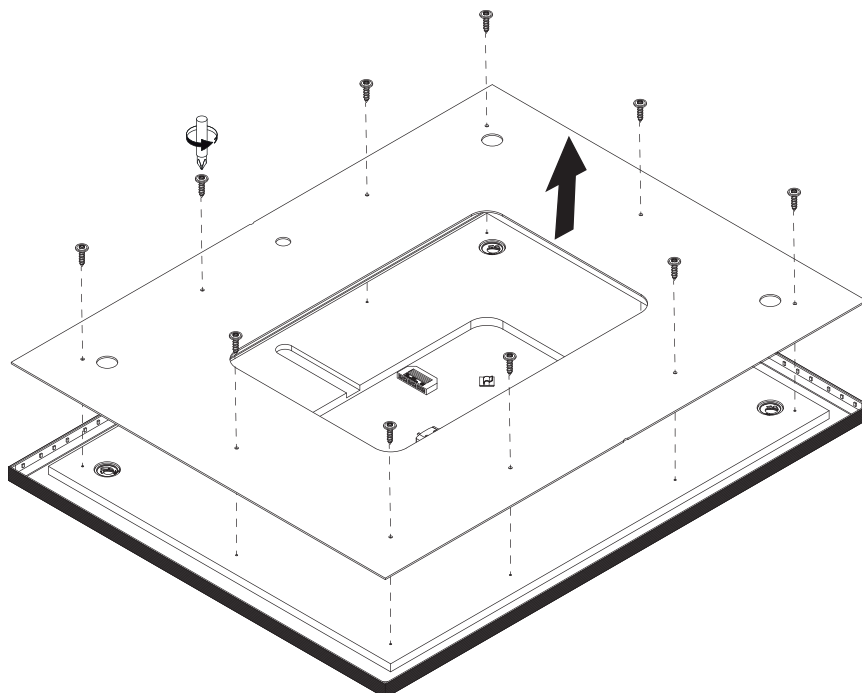
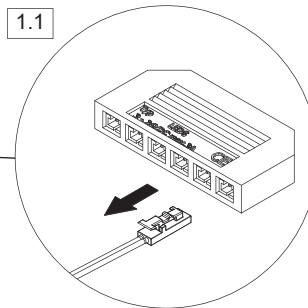


4SL0774490

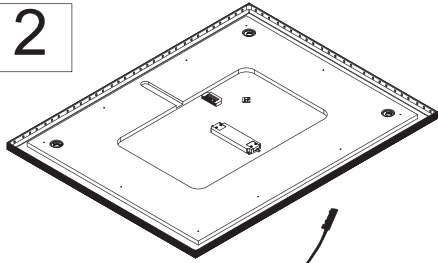
1 x



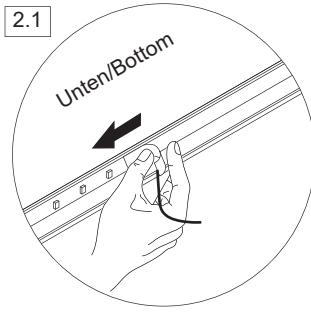
1.1



2



2.1



2.2

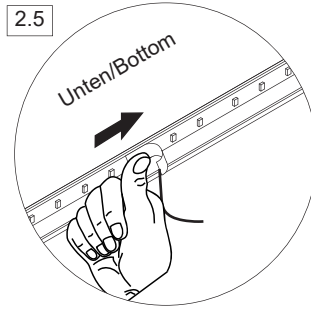


Klebereste vorsichtig entfernen/  
Remove adhesive residues carefully

2.4



2.5

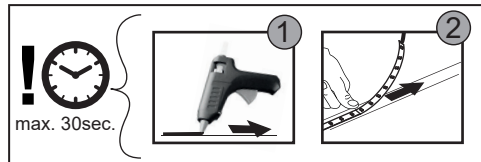
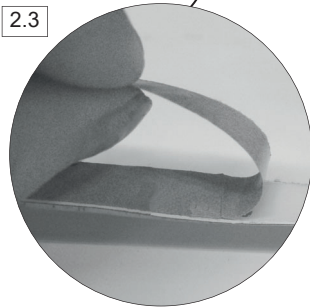


2.6



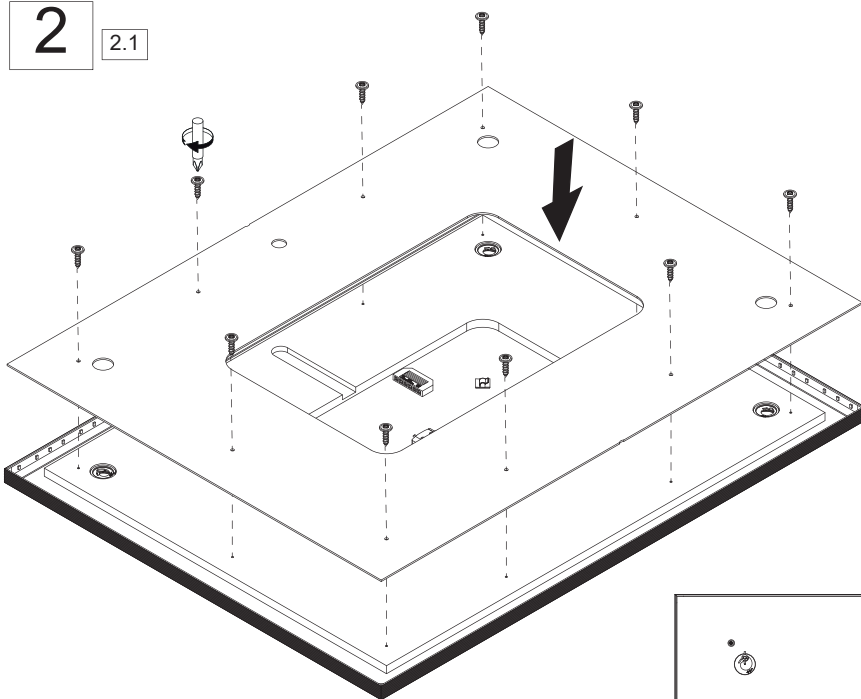
**Obere Kante** des LED-Bandes  
mit Heißkleber fixieren/  
**Fix upper edge** of LED-stripe  
with hot glue

2.3



2

2.1



1.1

